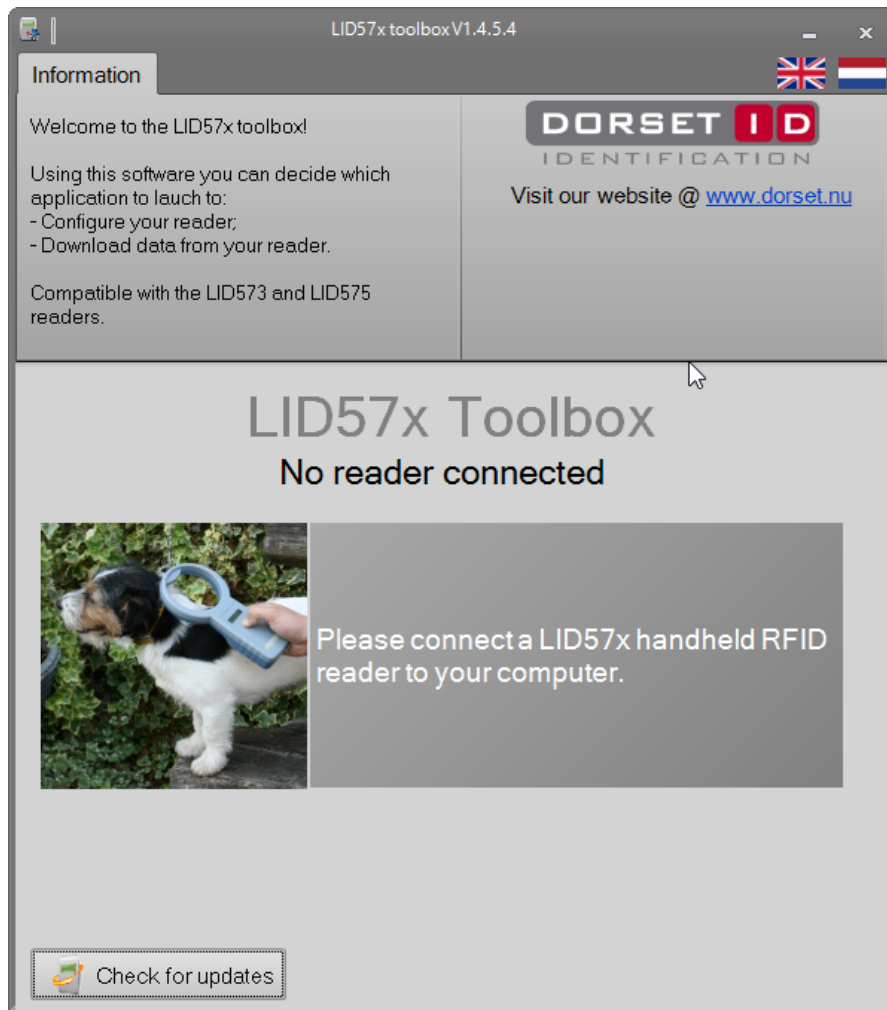


MANUAL LID57x TOOLBOX

VO.2

JUNE.2019



DORSET IDENTIFICATION B.V.

WEVERIJ 26

7122MS AALTEN

THE NETHERLANDS

WWW.DORSET.NU

INTRODUCTION:

This document describes the functionality of the Toolbox software application for the *LID573* & *LID575* handheld readers.



Summary

CONNECTING A HANDHELD READER.....	3
LID57x WIZARD.....	4
HISTORY EXTRACTOR	5
DOWNLOAD SETTINGS (4 BUTTON VERSION ONLY).....	6
CSV EXPORT SETTINGS.....	6
READER SETTINGS.....	6
HOW TO USE CUSTOM NAMES.....	7
HOW TO GENERATE NEW CUSTOM NAME FILES USING THE GENERATOR?	7
EXAMPLE OF HOW TO GENERATE A NEW BATCH WITH CUSTOM NAMES	8
CUSTOMNAME UPLOADER.....	11

Connecting a handheld reader

To connect the reader to the PC use the USB A to mini cable that is provided with the reader. After connecting the reader should be detected automatically by the software. (If not, check under device manager if the reader has been detected and the driver is properly installed).

The following screen will be visible once the reader is connected:



1. The firmware version of the connected reader is shown here {LID573V711i in this case}
2. Information field. When hovering over buttons 3,4,5 & 6 information on what you can do when pressing the button is shown in this field.
3. LID57x Wizard button starts the setup Wizard to put your reader in the right operation mode.
4. History extractor will open a new application that enables you to download data stored in your reader
5. Custom names will open a new application that will help you generate custom names and upload them to the reader
6. LID57x Bootloader starts a tool that will upload new firmware in the reader.
7. Check for updates button will check if a new version of toolbox has been released.

LID57x Wizard

Pressing the [Lid57x Wizard] button will open a new application that will guide you through the setup of the reader.



Simply press [Next>] to continue to the next step and follow the instructions.

Hovering of the screen will show *hints* about the use of that particular option.

If your reader is equipped with a Bluetooth classic or Bluetooth Low Energy (BLE) module you can also change the name of the device and the transmit options using this wizard.

History Extractor

If the Save data option is set, the reader will store the ID numbers read in the internal EEPROM (with date & time if selected).

This information can be retrieved by using the History Extractor tool.

Starting the tool the following screen will open:

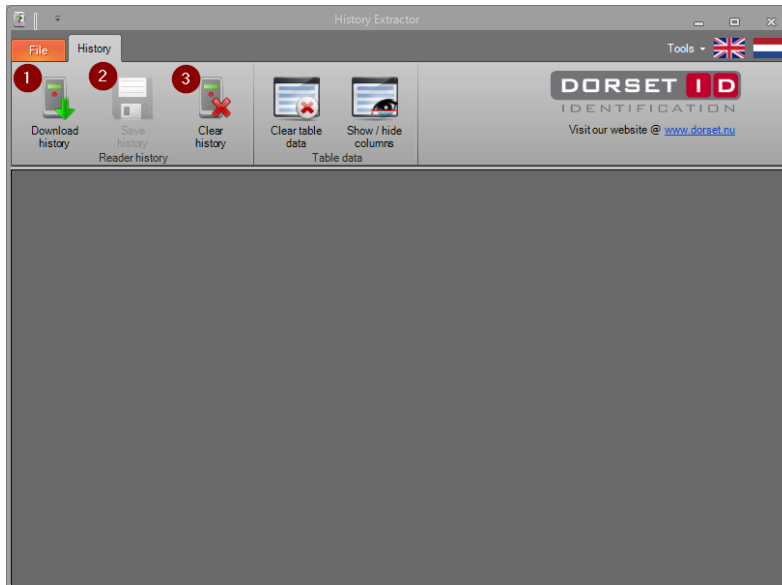


Figure 1 History extractor opening screen

After the data has been downloaded, you'll see a number of columns. The Columns you want to see can be selected by pressing the button [Show / hide columns].

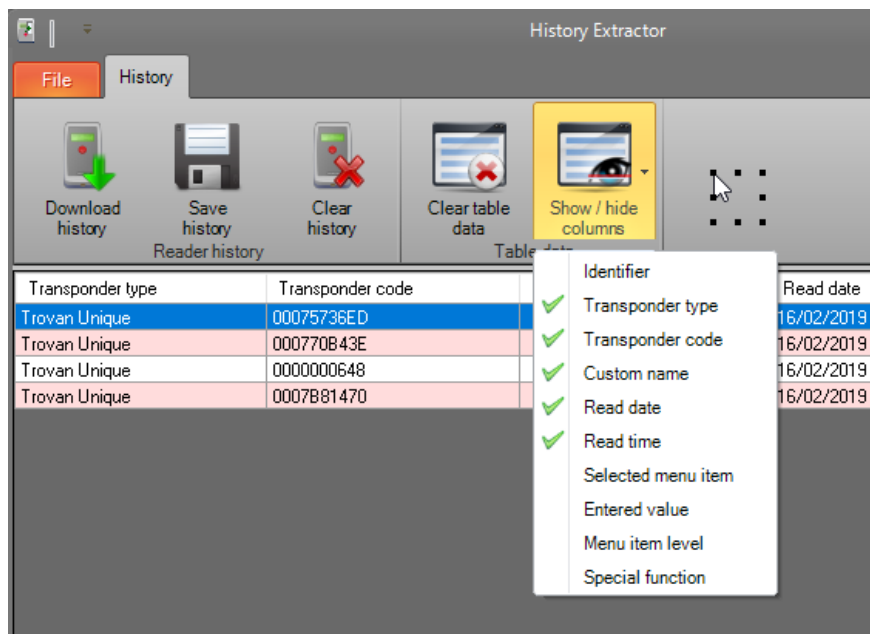
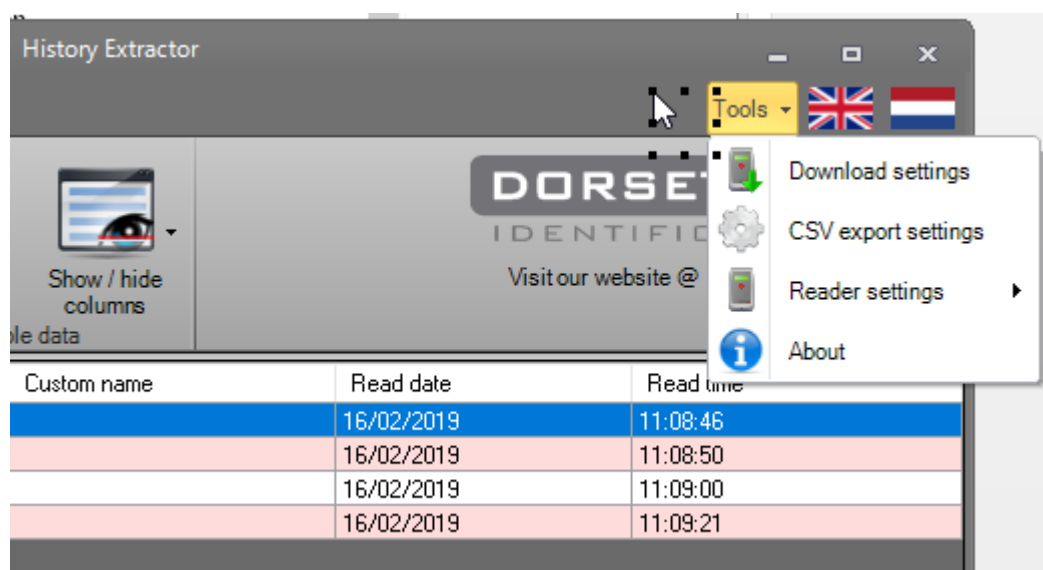


Figure 2 Selection of visible columns

Via the [Tools] button you can change some reader

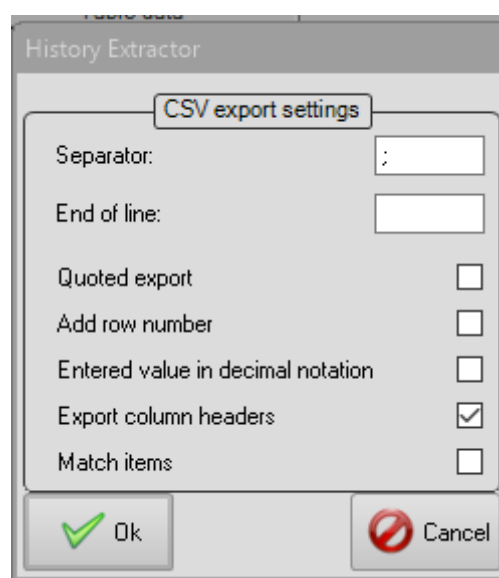


Download settings (4 button version only)

The download settings will open a screen that will enable you to select settings when using the **4 button version** of the handheld reader. These readers have a menu, and you can download every step of moving through the menu.

CSV export settings

The window that is opened when selecting this option gives you the opportunity to modify how the CSV file is stored on your computer.

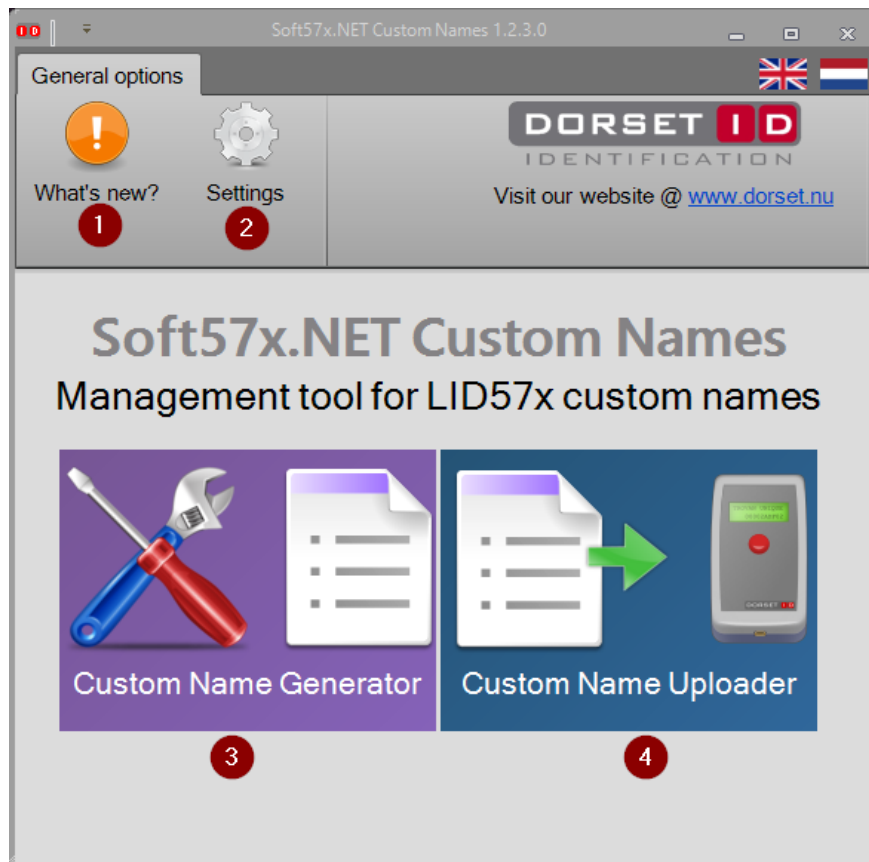


Reader settings

You can enable or disable the Save mode here and you can set the date/time of the reader to the PC time.

How to use Custom Names

A new window will open that gives you the possibility to generate new custom names or directly upload data from an existing file.



The What's new? Button gives information about what has been changed in each new version of this software tool. Via the Settings button you can select what separator has to be used when creating a new file.

How to generate new custom name files using the generator?

The window that is opened after choosing this button allows you to create new Custom name files, but also open existing files and append data.

Important note!

*If you have created a custom file in a different program (Excel for instance), the **first row** has to contain the following text: **Transponder code, Transponder type, Custom name***

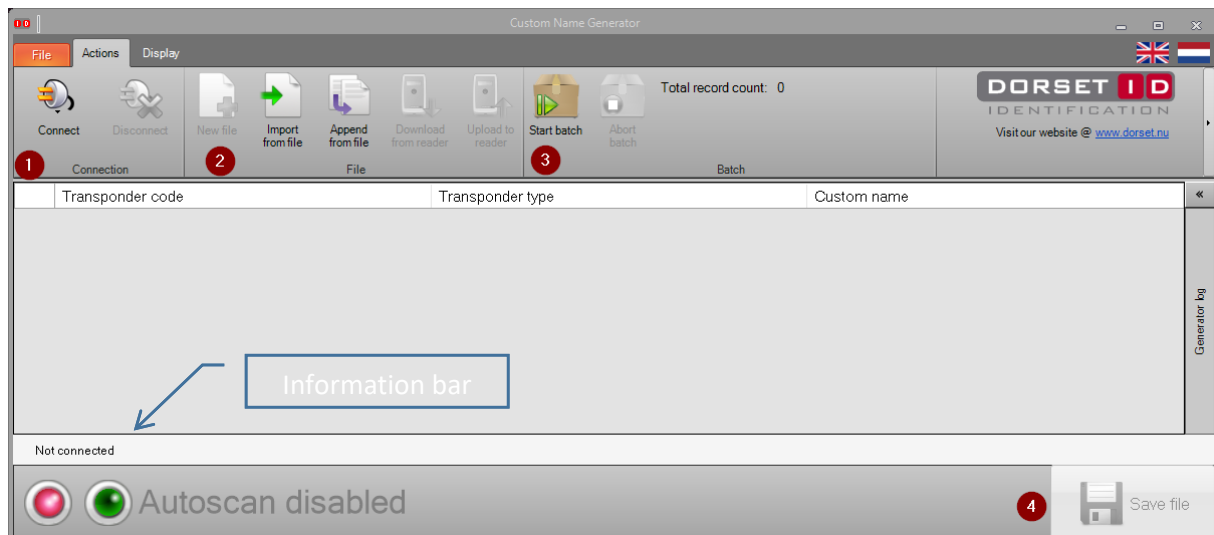



Figure 3 custom name generation window

1 In order to connect to a reader press the [connect] button and select the reader you want to use to generate file or upload the data to. For generation of a file using the automatic scanning function we recommend to use the **LID665-DT** unit (stationary USB reader) instead of a handheld reader (*some computers generate noise that could result in the reader not picking up tags when connected to USB*)

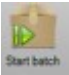
2 This part contains the File options. You can start a new file, import data from an existing file or append data from an existing file to the current loaded data. When a reader is connected you can also download Custom name information stored in that reader.

3 To automatically generate a new file press the [start batch]  button.

Example of how to generate a new Batch with custom names

After pressing  Connect , select the right COM port/reader.

The information bar will turn yellow and shows information about the connected reader.

The press the  button. The window that is opened will allow you to enter the basic information of a new Custom Name {CN} batch.

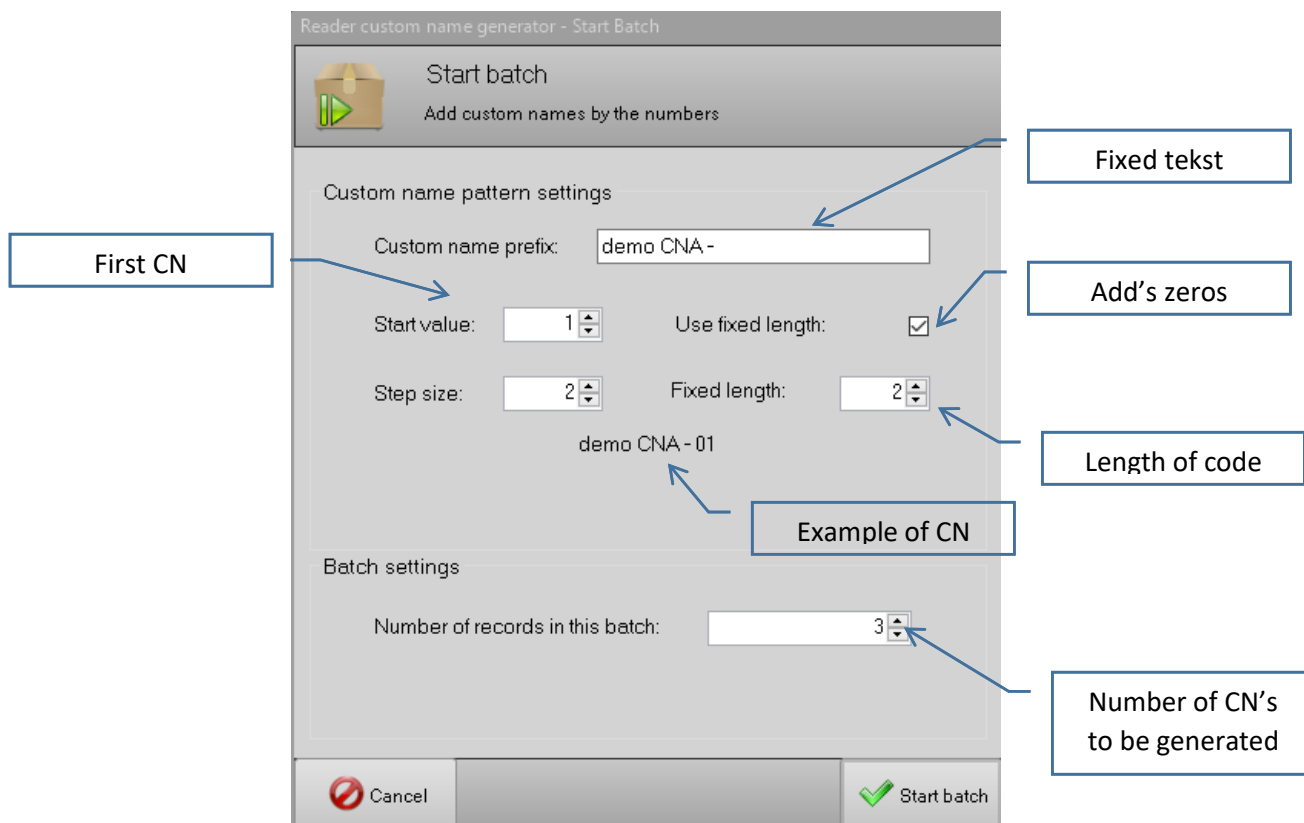

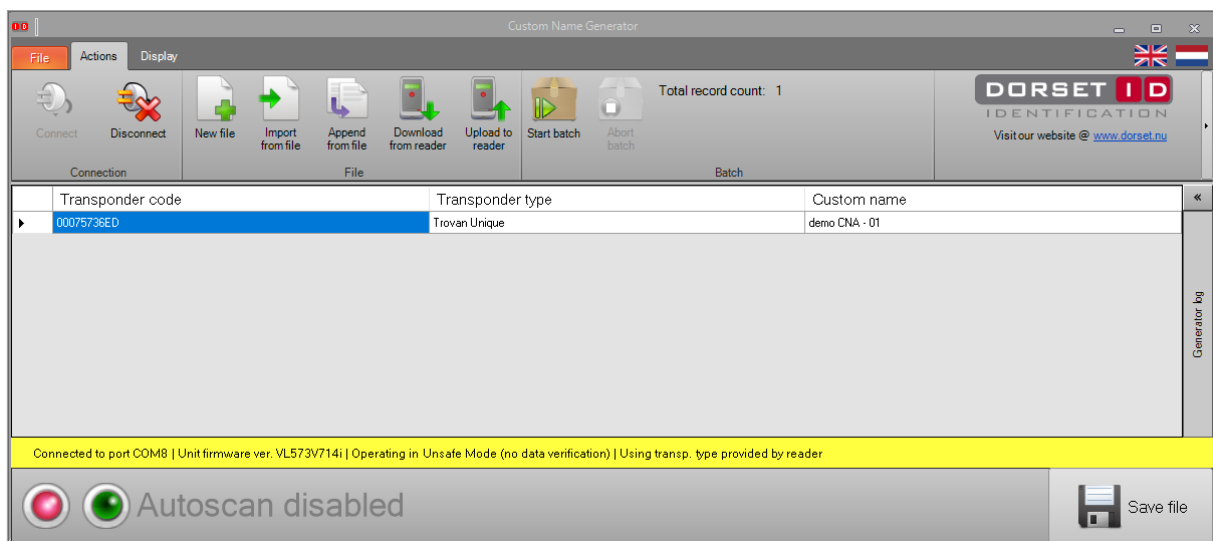



Figure 4 Badge generation window

After pressing  the Autoscan will be enable and the reader (Preferably the LID665-DT USB desktop reader) will start scanning.


When a tag is read it is automatically added, keep repeating scanning tags until the batch is completed.



Once the batch is completed, you can press  to store the new CN file on your computer.

To upload the file to your handheld reader, press



Altering a custom name afterwards is possible by clicking on position  in the table.

A “Quick edit” window  will open.

Here you can alter the Custom Name and store the new name.

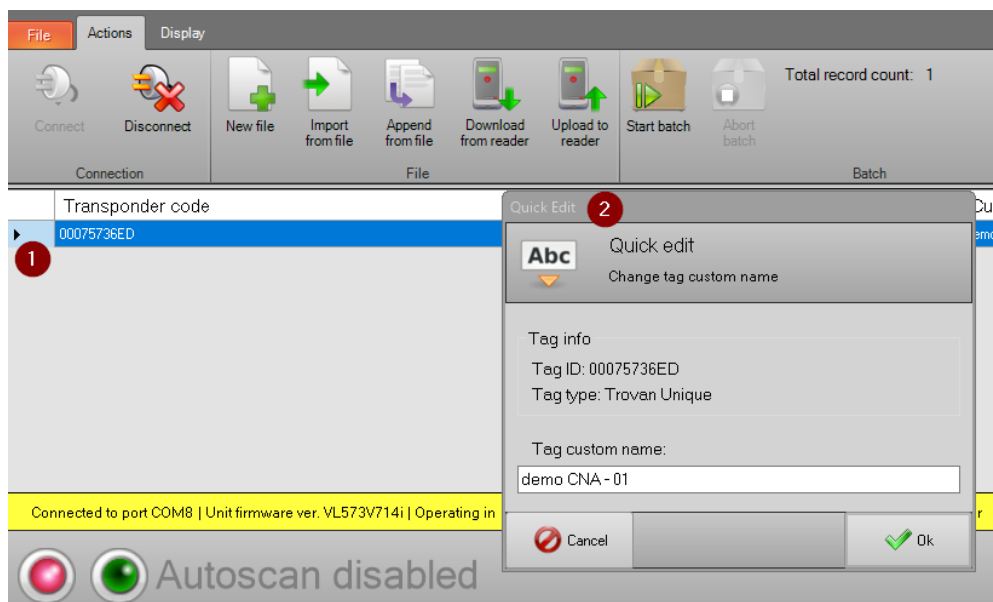


Figure 5 Quick edit CN window

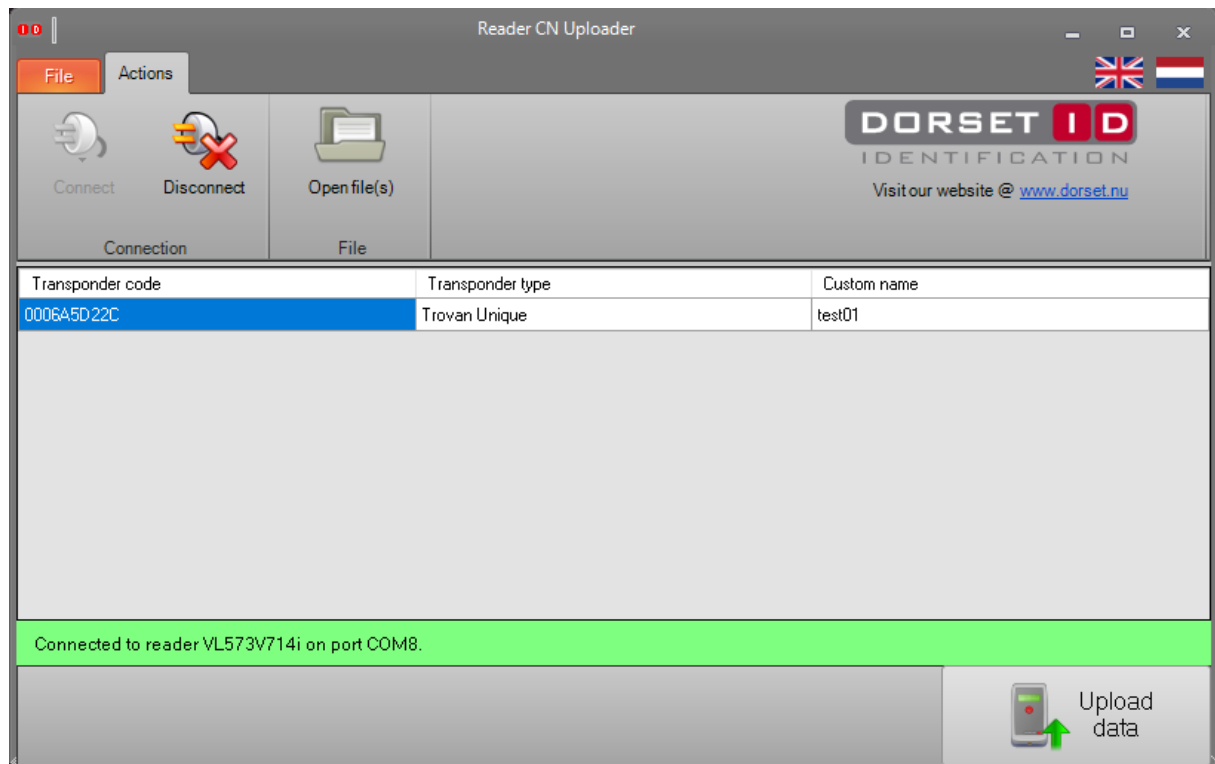
CustomName Uploader

The uploader tool can be used if you already have a file that you want to copy to the readers memory.

After connecting to the reader and selecting the desired file. Press



to copy the



You'll be asked if the current CN data in the reader should be erased. If you select no, the current file will be append to the CN data already present in the reader.

If the reader is not set to "Use Custom names", you'll be asked if the reader should start using custom names. Only if this option is activated the CN's will be shown on the readers LC Display.