

User Manual LID57X Toolbox

Connecting a handheld reader

To connect the reader to the PC use the USB A to USB C cable that is provided with the reader, or mount the reader in the docking station and connect the USB C cable for the docking station to the laptop.

After connecting the reader should be detected automatically by the software. (If not, check under device manager if the reader has been detected and the driver is properly installed).

The following screen will be visible once the reader is connected:



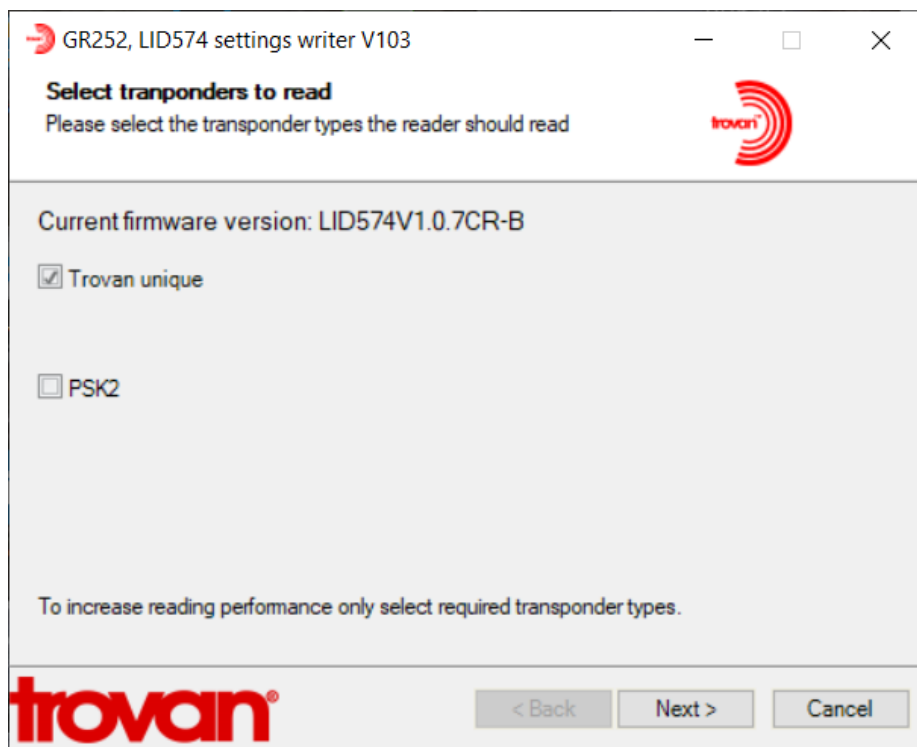
1. The firmware version of the connected reader is shown here {LID574V1.0.7CR-B in this case}
2. Information field. When hovering over the various buttons, ("LID574 Settings", "History Extractor" etc) information on what you can do when pressing the button is shown in this field at the top of the page.
3. LID574 Settings button starts the setup Wizard to put your reader in the right operation mode.
4. History extractor will open a new application that enables you to download data stored in your reader and save it to your computer
5. Custom names will open a new application that will help you generate custom names and upload them to the reader
6. LID574 Bootloader starts a tool that will upload new firmware in the reader.
7. Check for updates button will check if a new version of toolbox has been released.

LID574 Settings Wizard

1. Select - next

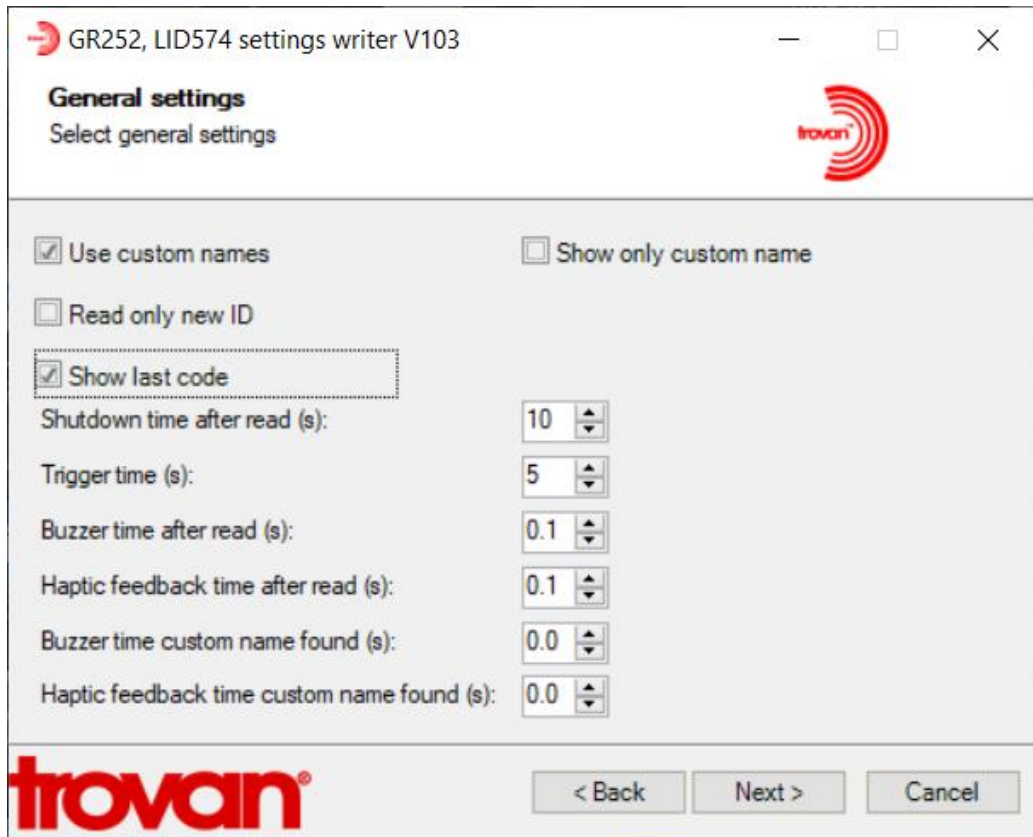


2. Select - next



The Trovan unique box should be ticked by default

3. These are the normal setting - Select next



GR252, LID574 settings writer V103

General settings
Select general settings

☒ Use custom names ☐ Show only custom name

☐ Read only new ID

☒ Show last code

Shutdown time after read (s): 10

Trigger time (s): 5

Buzzer time after read (s): 0.1

Haptic feedback time after read (s): 0.1

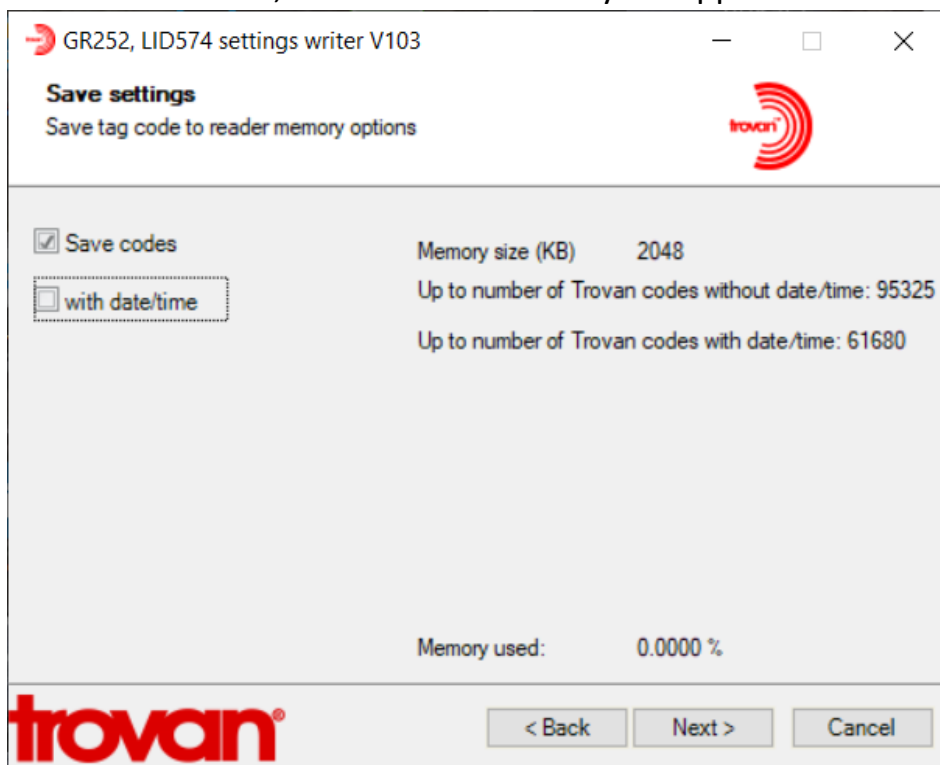
Buzzer time custom name found (s): 0.0

Haptic feedback time custom name found (s): 0.0

trovan

< Back Next > Cancel

4. Select Save Codes, or both if needed in your application – Select Next



GR252, LID574 settings writer V103

Save settings
Save tag code to reader memory options

☒ Save codes

☐ with date/time

Memory size (KB) 2048

Up to number of Trovan codes without date/time: 95325

Up to number of Trovan codes with date/time: 61680

Memory used: 0.0000 %

trovan

< Back Next > Cancel

5. This screen has the selections if you want to send the Transponder code, Custom name to a Excel Spread sheet via USB with a carriage return /line feed - Select Next

GR252, LID574 settings writer V103

Communication settings
Set communication options

trovan

Send id by USB

☒ Send ID by USB

☐ USB Comport

☒ USB Keyboard

USB HID format

<ID><SCN><ENTER>

ID

Tag type HEX Tag type text Custom name

<CR> <LF> / <ENTER> <TAB>

trovan

< Back Next > Cancel

6. Or this selection if you want to send the transponder code to a interactive data collection system via the USB Connection with a carriage return /line feed, (i.e. Provantis)

GR252, LID574 settings writer V103

Communication settings
Set communication options

trovan

Send id by USB

☒ Send ID by USB

☒ USB Comport

☐ USB Keyboard

USB CDC format

<ID><LF>

ID

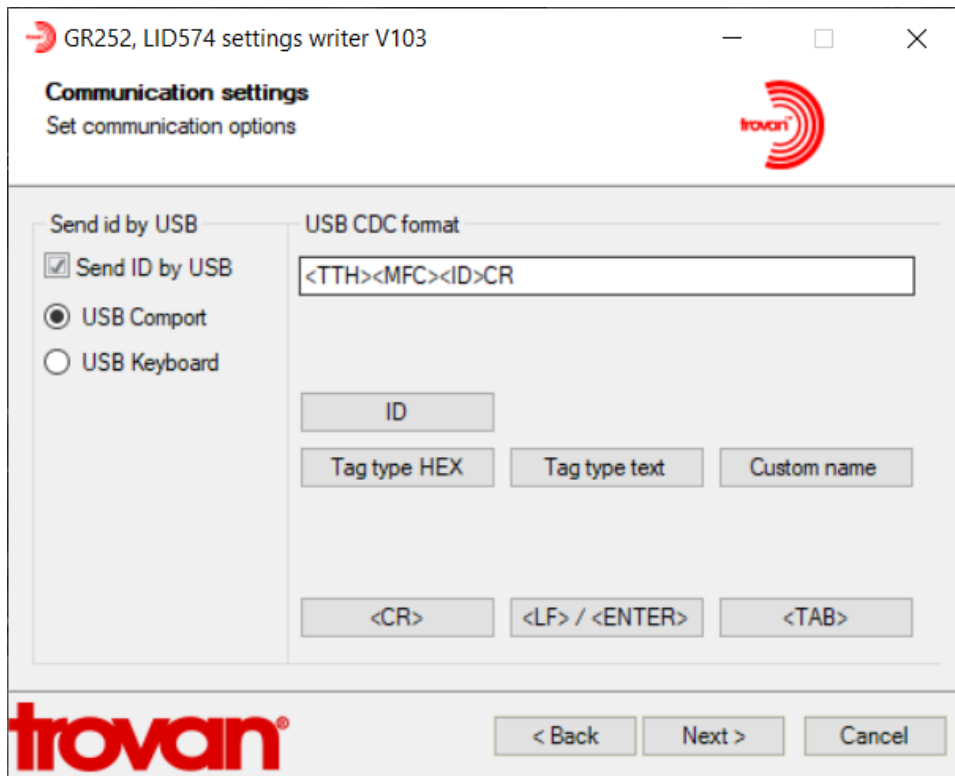
Tag type HEX Tag type text Custom name

<CR> <LF> / <ENTER> <TAB>

trovan

< Back Next > Cancel

7. Or this selection if you want to send the transponders read information via USB to create a Custom Name File



The screenshot shows a software window titled "GR252, LID574 settings writer V103" with a Trovan logo in the top right corner. The window is divided into two main sections. The left section, titled "Communication settings" with the subtitle "Set communication options", contains three radio button options: "Send ID by USB" (which is checked), "USB Comport", and "USB Keyboard". The right section, titled "USB CDC format", contains a text input field with the value "<TTH><MFC><ID>CR". Below this field are three buttons: "ID", "Tag type HEX", and "Tag type text". At the bottom of the right section are three buttons: "<CR>", "<LF> / <ENTER>", and "<TAB>". The bottom of the window features the Trovan logo on the left and three navigation buttons: "< Back", "Next >", and "Cancel".

GR252, LID574 settings writer V103

Communication settings
Set communication options

trovan

Send id by USB

☒ Send ID by USB

☐ USB Comport

☐ USB Keyboard

USB CDC format

<TTH><MFC><ID>CR

ID

Tag type HEX

Tag type text

Custom name

<CR>

<LF> / <ENTER>

<TAB>

trovan

< Back

Next >

Cancel

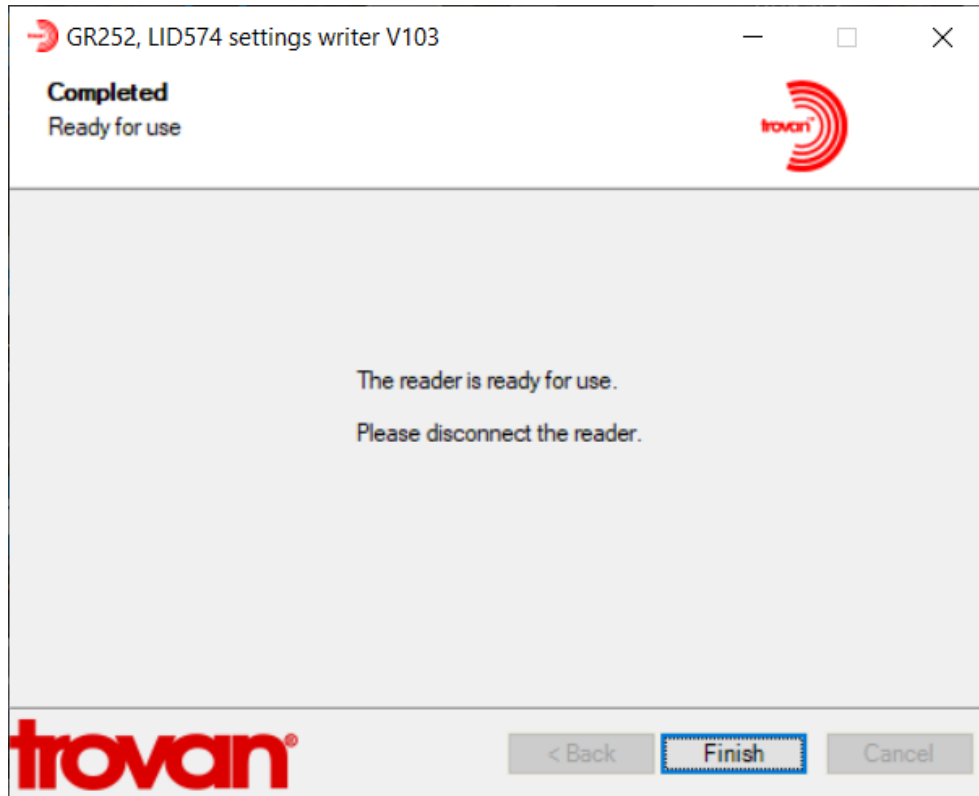
8. This screen has the selections if you want to send the Transponder code, Custom name via BT to a Excel Spread sheet with a carriage return /line feed - Select Next

The screenshot shows the 'GR252, LID574 settings writer V103' window. The title bar includes a red arrow icon, the text 'GR252, LID574 settings writer V103', and standard window controls. The main header area displays 'Communication settings: BLE' and 'Wireless connection settings' on the left, and the 'trovan' logo on the right. The interface is divided into two main sections. The left section, titled 'Send id by Bluetooth', contains five radio button options: 'Send ID by Bluetooth' (checked), 'Keep connected', 'Always connected', 'Bootup connect, after sent disconnect', and 'Connect when tag found, after sent disconnect' (selected with a black dot). The right section, titled 'Ble format', features a text input field containing '<ID><SCN><ENTER>'. Below this field are three buttons: 'ID', 'Tag type HEX', and 'Tag type text'. At the bottom of this section are three more buttons: '<CR>', '<LF> / <ENTER>', and '<TAB>'. The bottom of the window features the 'trovan' logo on the left and three navigation buttons: '< Back', 'Next >', and 'Cancel'.

9. Or this selection if you want to send the transponder code via Blue Tooth to a interactive data collection system with a carriage return /line feed

This screenshot is identical to the one above, showing the 'GR252, LID574 settings writer V103' window. The title bar, header, and 'Send id by Bluetooth' section are the same. In the 'Ble format' section, the text input field still contains '<ID><SCN><ENTER>'. The buttons 'ID', 'Tag type HEX', 'Tag type text', '<CR>', '<LF> / <ENTER>', and '<TAB>' are present. The bottom of the window shows the 'trovan' logo and the '< Back', 'Next >', and 'Cancel' buttons.

10. Select Finish, "The Reader is ready for use"

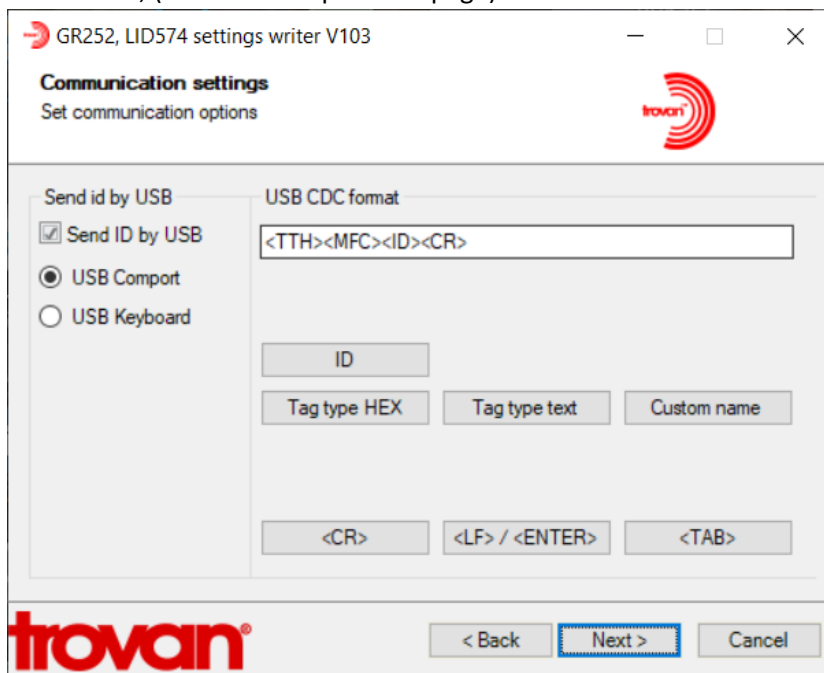


LID57x/GR252 Custom Names

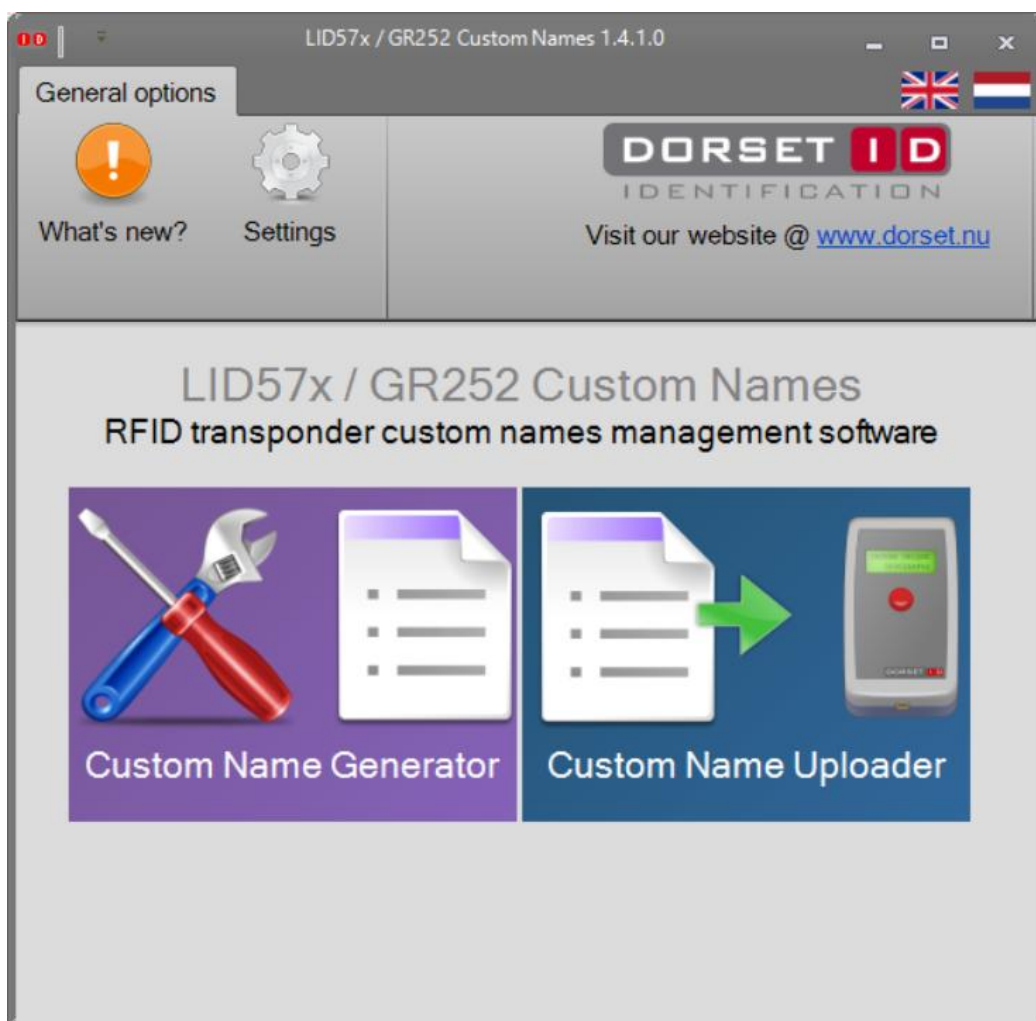
Selecting the Custom Names button will open a new application



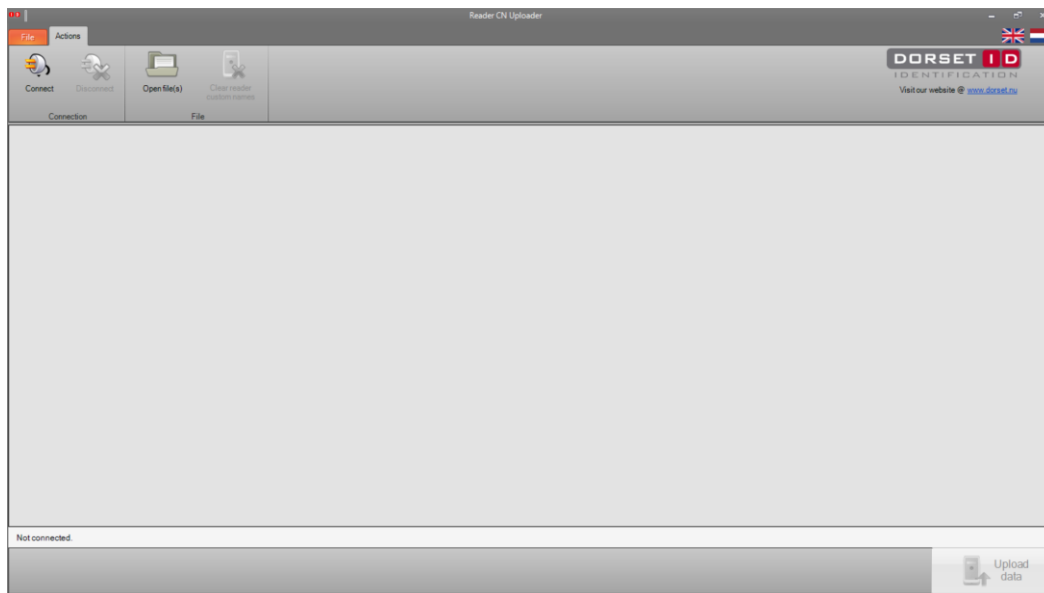
1. Select these setting to use the custom name generator when setting up to use the instrument, (see slide 7 in previous page)



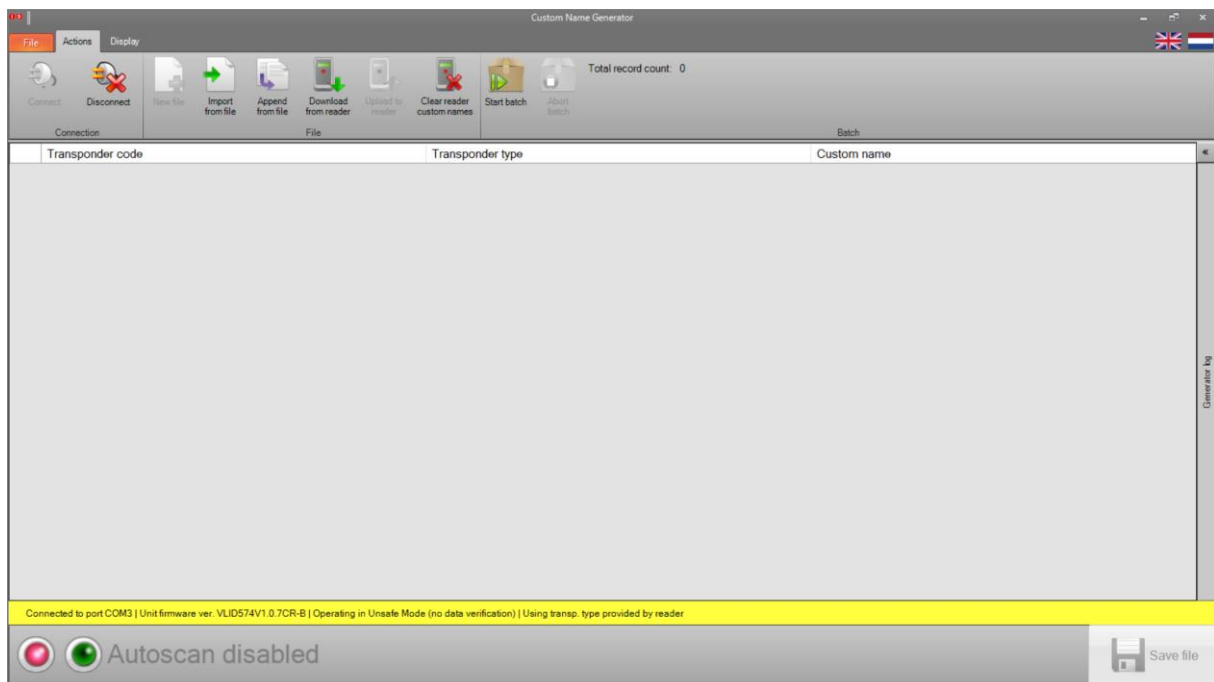
2. Select the Custom Name Generator



3. Select - Connect




4. You will see the port that you are connected to-in this case (not shown) com3



5. Select - Start Batch- Enter the prefix, start value, step size and fixed length (showed in example)

Reader custom name generator - Start Batch

 **Start batch**
Add custom names by the numbers

Custom name pattern settings

Custom name prefix:



Start value: Use fixed length: ☒

Step size: Fixed length:

animal-001

Batch settings

Number of records in this batch:

 Cancel  Start batch

6. This is the sample of the generated Custom Name Table

7. To save this file to your computer - Select Save File



Custom Name Generator

File Actions Display

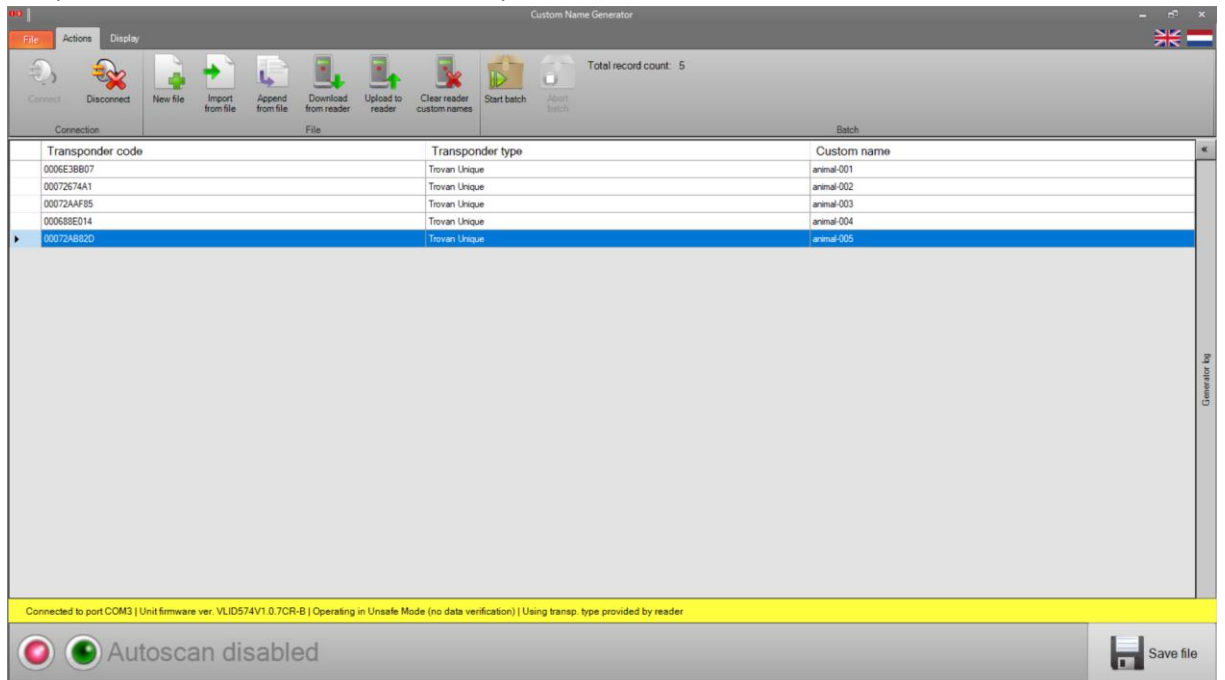
Convert Disconnected New file Import from file Append from file Download from reader Upload to reader Clear reader custom names Start batch Abort batch Total record count: 5

Transponder code	Transponder type	Custom name
0006E3B807	Trovan Unique	animal-001
00072674A1	Trovan Unique	animal-002
00072AAF85	Trovan Unique	animal-003
000688ED14	Trovan Unique	animal-004
00072AB82D	Trovan Unique	animal-005

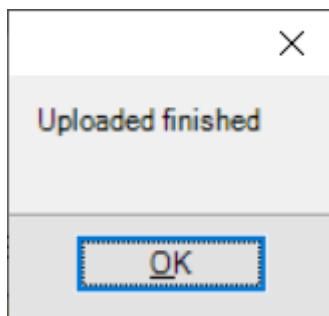
Connected to port COM3 | Unit firmware ver: VLID574V1.0.7CR-B | Operating in Unsafe Mode (no data verification) | Using transp. type provided by reader

 Autoscan disabled  Save file

8. To upload this file to the reader Select - Upload to Reader



9. Select - OK



Clients connected to Provantis

Run the Custom Name generator in Provantis. (I don't have the information on what it' is called in Provantis)

This should be the type of file (a csv file) created by Provantis with the transponder type, code and user code

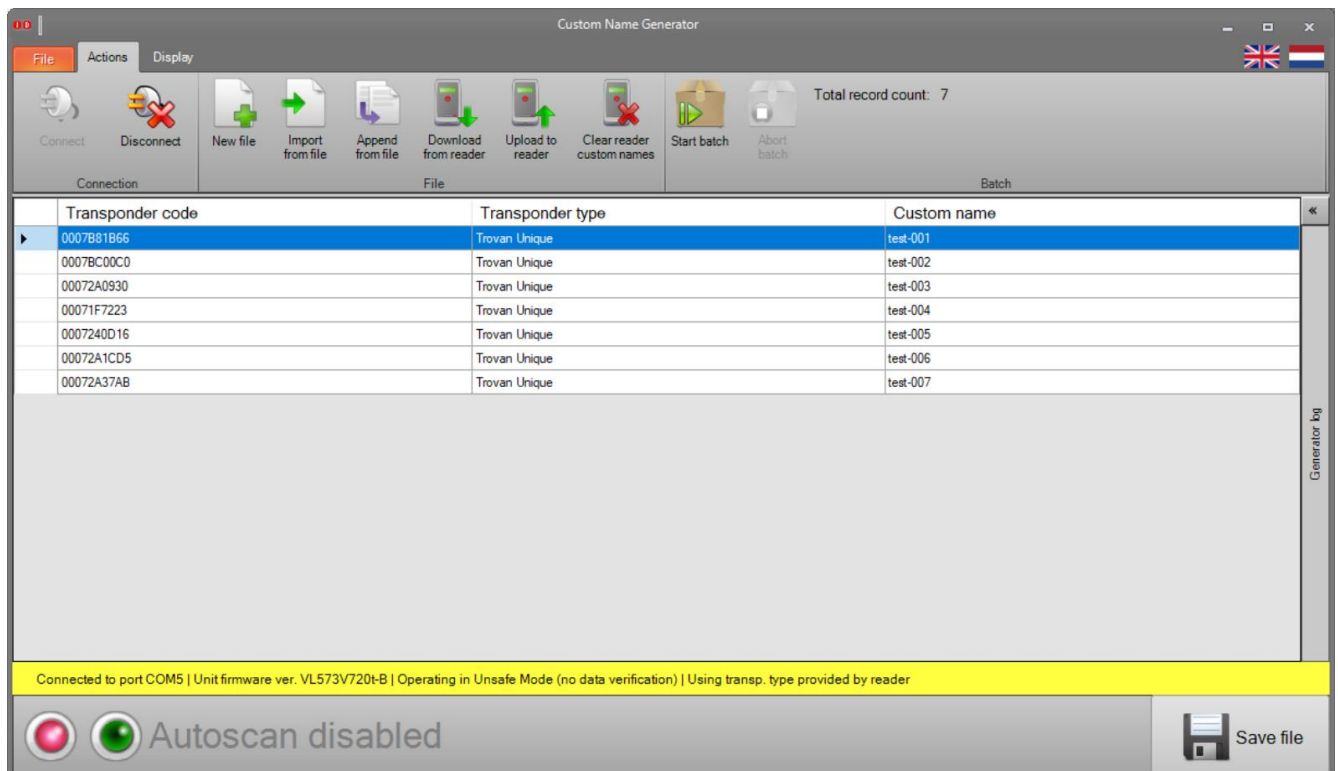
Note this might be a different format from Provantis, (I don't know how the file looks like from Provantis

Transponder type	Transponder code	Custom name
Trovan Unique	0007B81B66	test-001
Trovan Unique	0007BC00C0	test-002
Trovan Unique	00072A0930	test-003
Trovan Unique	00071F7223	test-004
Trovan Unique	0007240D16	test-005

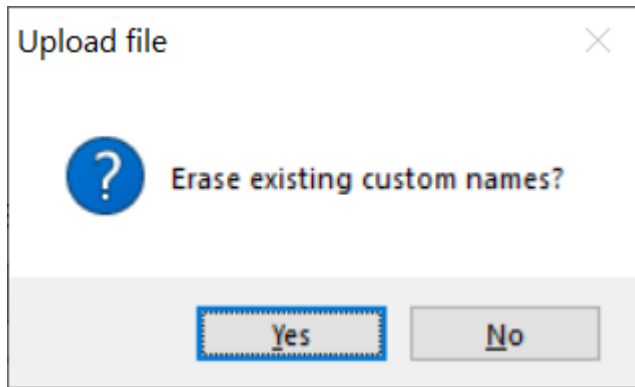
1. Select - Connect

NOTE: You can load more than 1 study animal number file to each LID573, LID574.

2. Select - import from file.

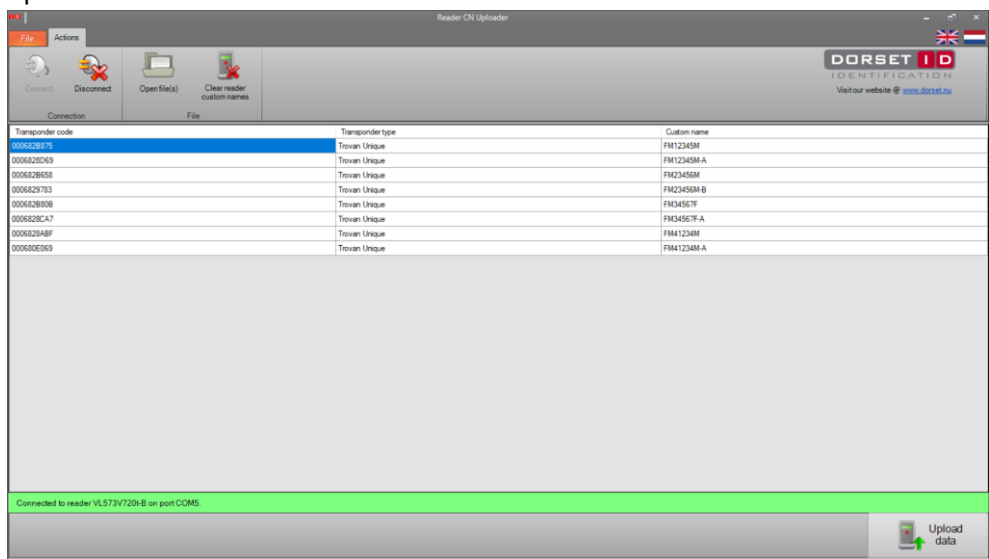


3. Select - Upload to reader

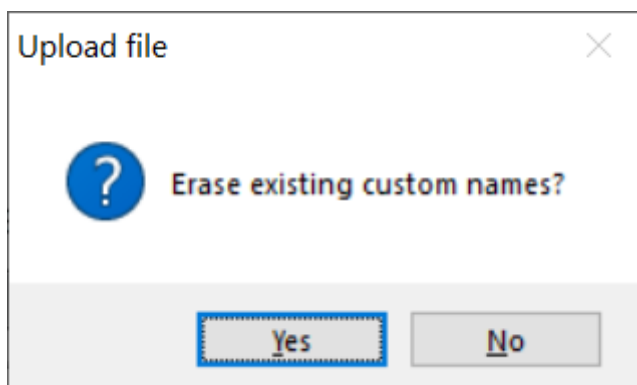


4. Select - No

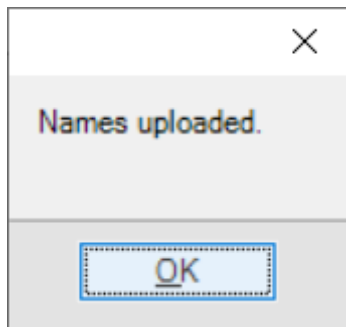
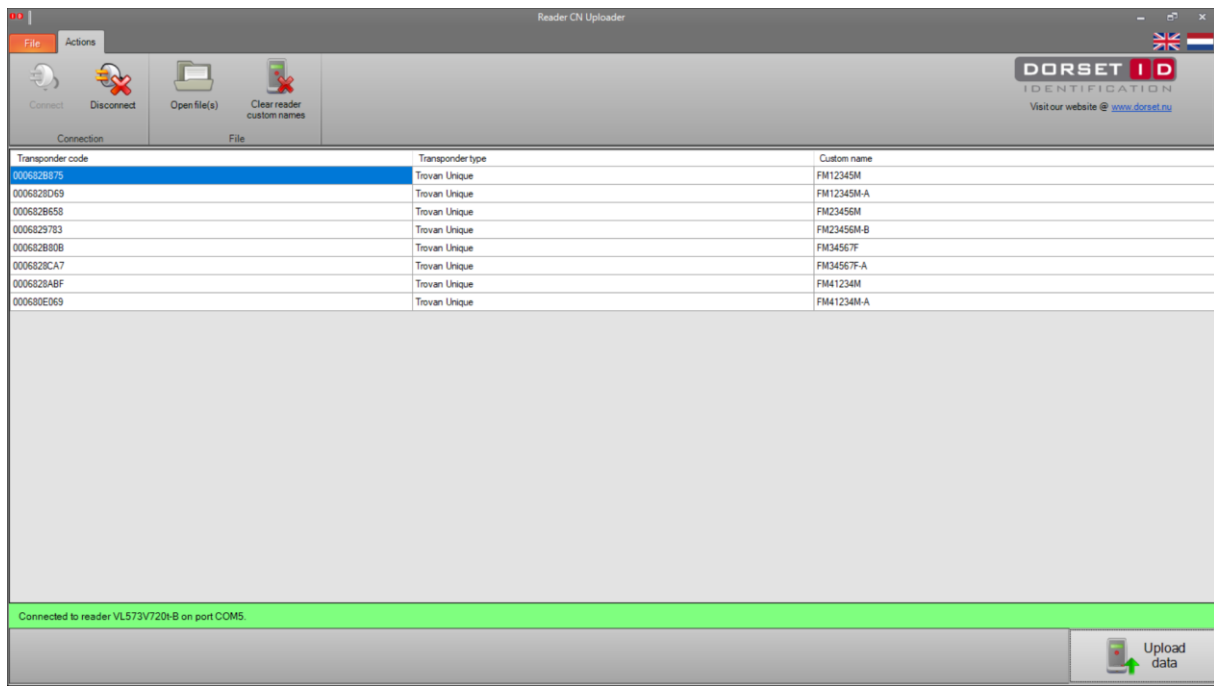
Open the next custom name file



5. Select - Upload data



6. Select - No

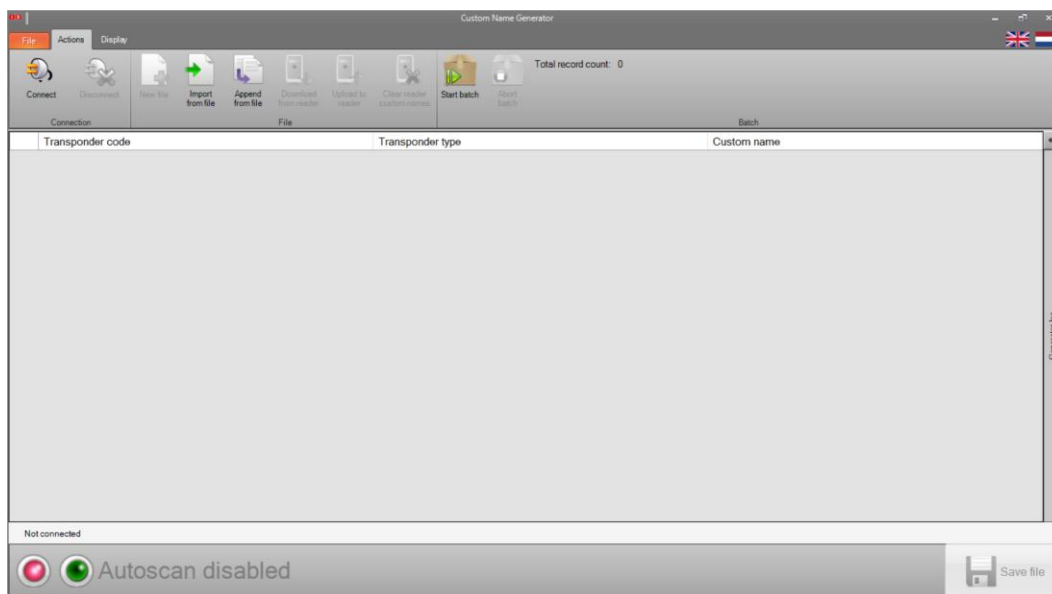


7. Select - OK to Exit out of the program.

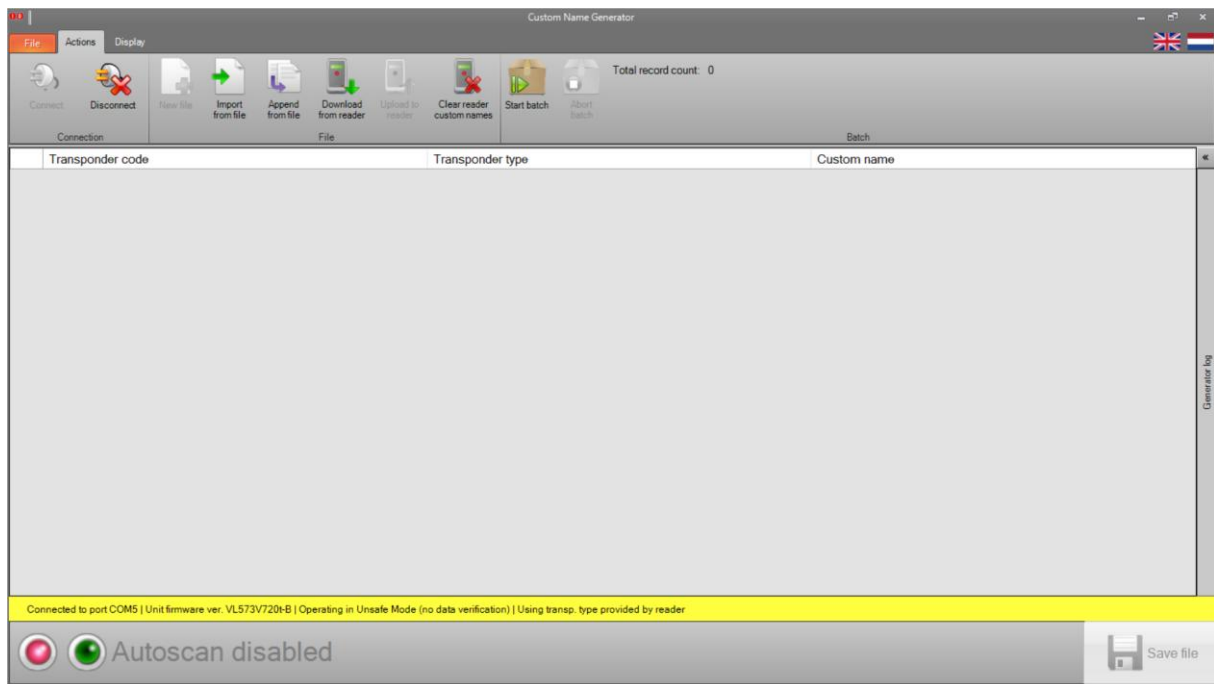
To verify what is loaded on the reader perform these steps



1. Select Custom Name Generator. – Select Connect.



2. Select - Download From Reader



3. This will be displayed. (your data will be different depending on your input)

