

Setup Documentation for the LID574V1.2.6TID-B

The screenshot shows the LID57x toolbox V1.4.23.0 application window. The title bar reads "LID57x toolbox V1.4.23.0". The main content area features a welcome message: "Welcome to the LID57x toolbox!". Below this, it states: "Using this software you can decide which application to launch to:" followed by a list of functions: "-Configure your reader.", "-Download data from your reader.", "-Upload custom names to your reader.", and "-Update firmware". The Trovan Dorset ID Identification logo is visible in the top right. A compatibility note states: "Compatible with the LID573, LID574, LID575 and GR252 readers." The central heading is "LID57x Toolbox" with the sub-heading "Reader version: LID574V1.2.6TID-B". A central image shows a handheld reader device. Below the image, the text "BLE-HID-V308" is displayed. On the left, there are three buttons: "LID574 Settings", "LID574 Bootloader", and "BLE bootloader". On the right, there are two buttons: "History extractor" and "Custom names". At the bottom left, there is a "Check for updates" button with a checkmark icon. At the bottom right, there is a checkbox labeled "Automatically check for updates".

LID57x toolbox V1.4.23.0

Welcome to the LID57x toolbox!

Using this software you can decide which application to launch to:

- Configure your reader.
- Download data from your reader.
- Upload custom names to your reader.
- Update firmware

Compatible with the LID573, LID574, LID575 and GR252 readers.

LID57x Toolbox
Reader version: LID574V1.2.6TID-B

LID574 Settings

LID574 Bootloader

BLE bootloader

History extractor

Custom names

BLE-HID-V308

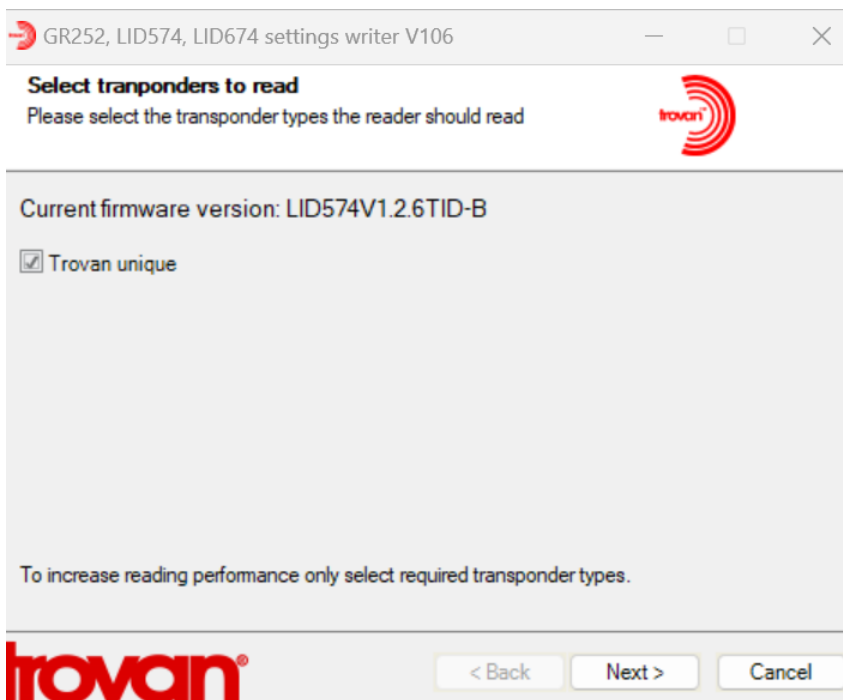
Check for updates

Automatically check for updates

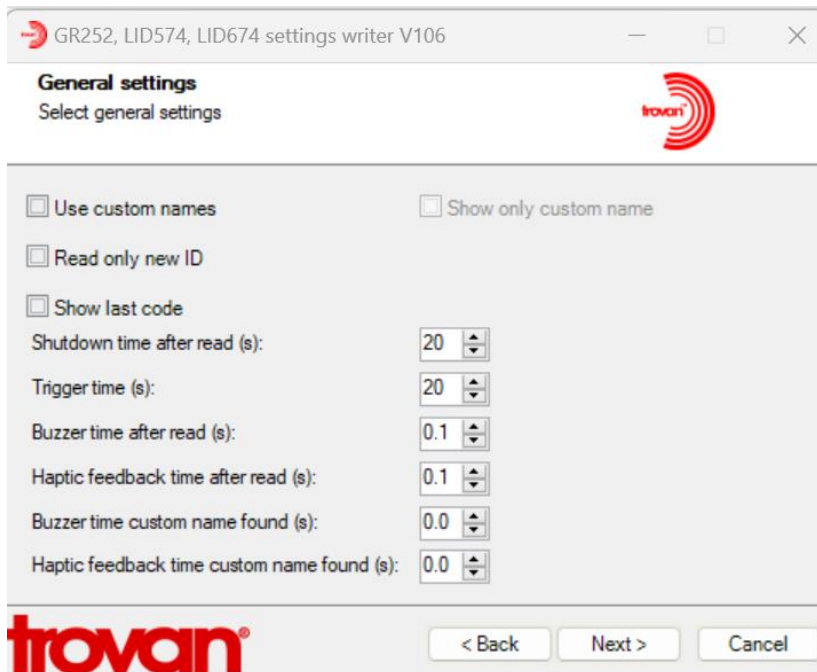
Click on the settings button



Click on Next Button

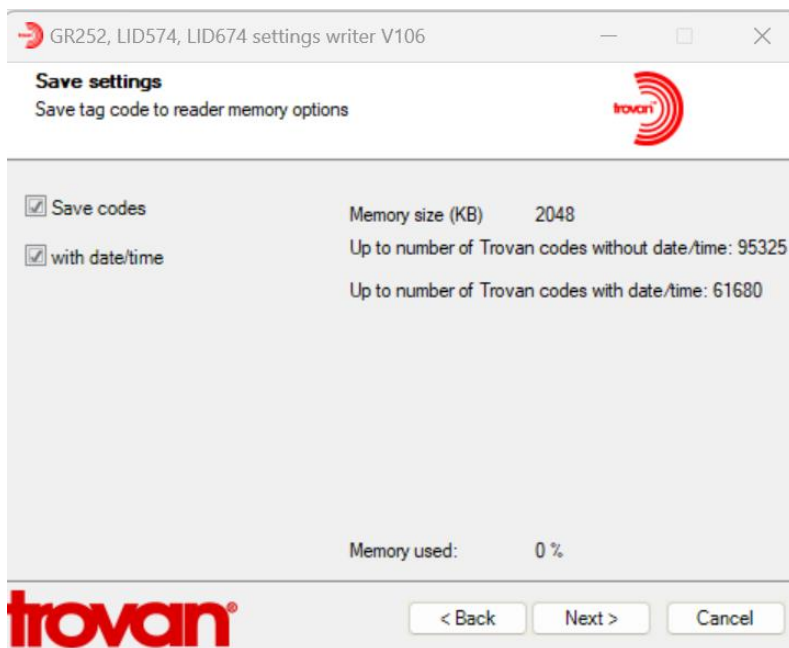


Click on Trovan Unique Button



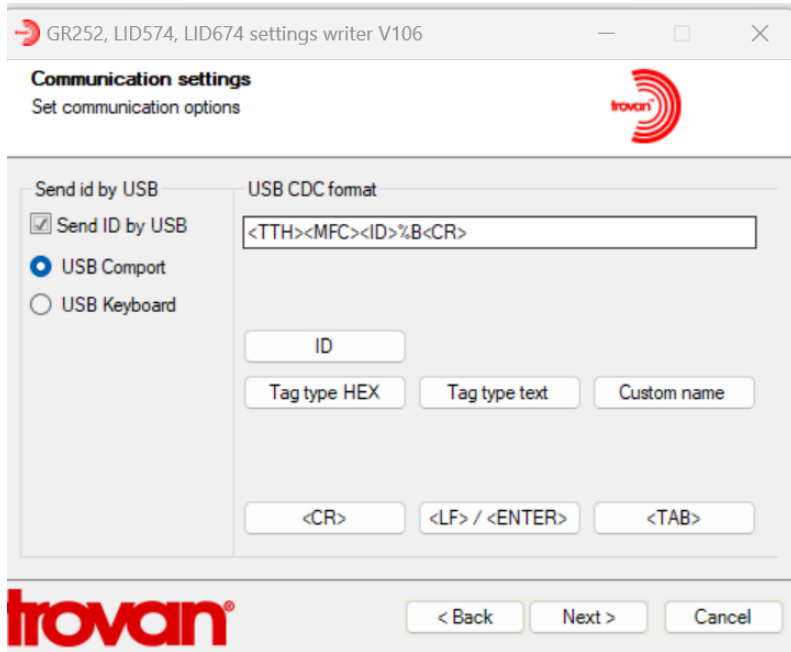
This screen sets various activation times and custom names set up.

You can reduce battery Consumption (reduce the shutdown time after read interval)

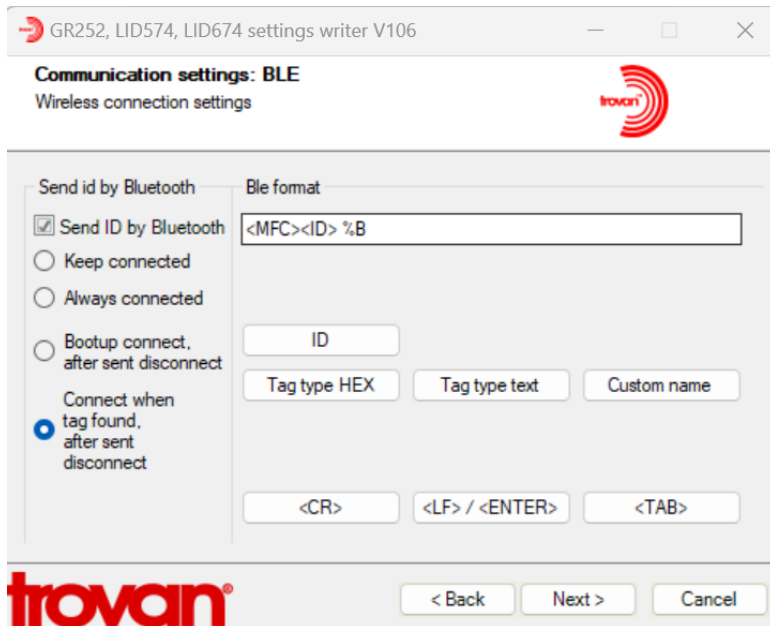


This screen allows you to save codes to the reader to download later of and save a file to your laptop.

Settings if you want to send the code to a spreadsheet via USB Port



Settings if you want to send the code to a spreadsheet via Bluetooth



The reader is ready to use. Disconnect the reader.

