

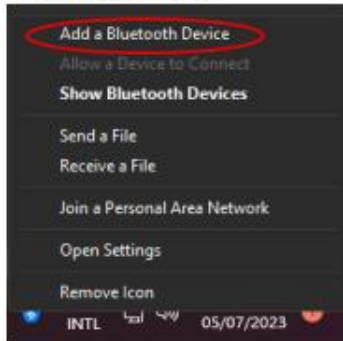
Step 1 (Windows 11)

open Bluetooth



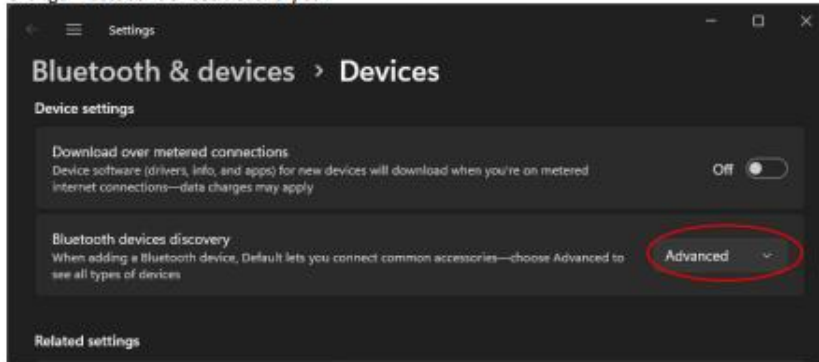
Step 2 (Windows)

"Add a Bluetooth Device"

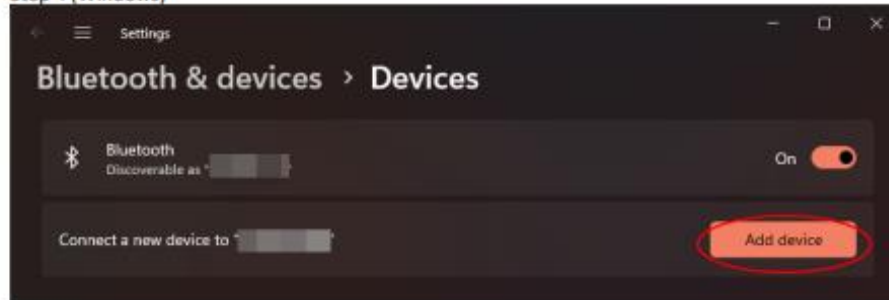


Step 3 (Windows)

Change Bluetooth devices discovery to:

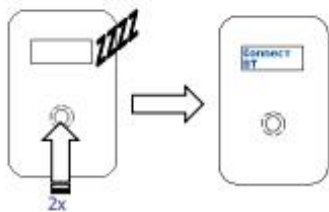


## Step 4 (Windows)

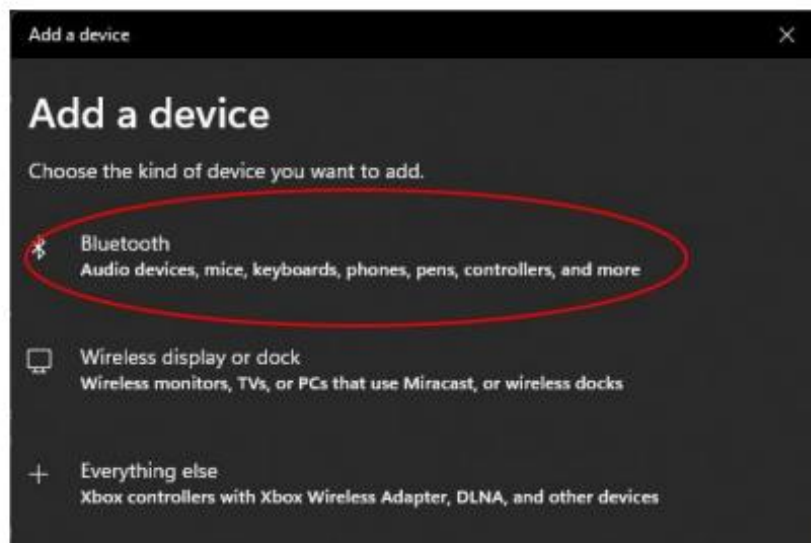


## Step 5 (Reader)

Reader connect mode



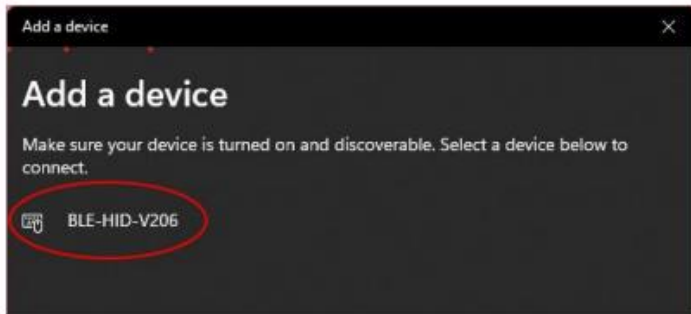
## Step 5 (Windows)



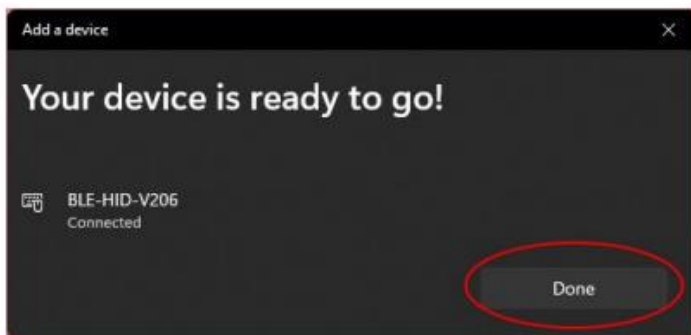
# MICROCHIP ID

Step 6 (Windows)

Please select "BLE-HID-Vxxx"



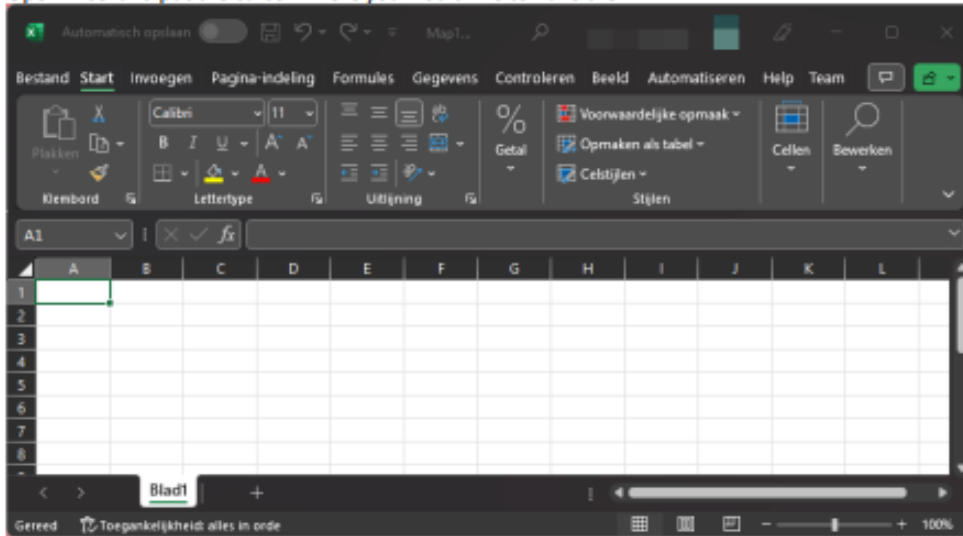
Step 7 (Windows)



# MICROCHIP ID

## Step 8 (Windows)

Open Excel and put the cursor where you would like to have the ID



## Step 9 (Windows + Reader)

Scan a transponder

