

## BLE Pairing to single handheld

This PC tool can be used to pair a LID573/4/5 with BLE to a BLE-BASE station.

The software is easy to use, start the software and make sure the BLE Base is connected.

The window below is shown:



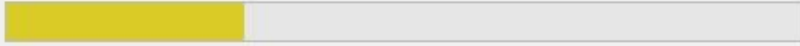
*Figure 1 BLE Base is found, pairing process can be started.*

Press the [Start Pair] button to start the pairing process. Pairing is done by scanning a tag with the handheld that you'd like to pair to connected dongle.

**trovan**<sup>®</sup>

**DORSET ID**  
IDENTIFICATION

SEARCHING...



PLEASE SCAN A TAG...



FIRMWARE: LID-BLE-UACL-V299

Figure 2 Scan a tag to pair reader with dongle

**trovan**<sup>®</sup>

**DORSET ID**  
IDENTIFICATION

START PAIR



0006A5D22C



FIRMWARE: LID-BLE-UACL-V299

Figure 3 Tag ID is shown, and progress bar is green to indicate successful pairing

If no reader is found the Progress bar is Red, the window below will be show

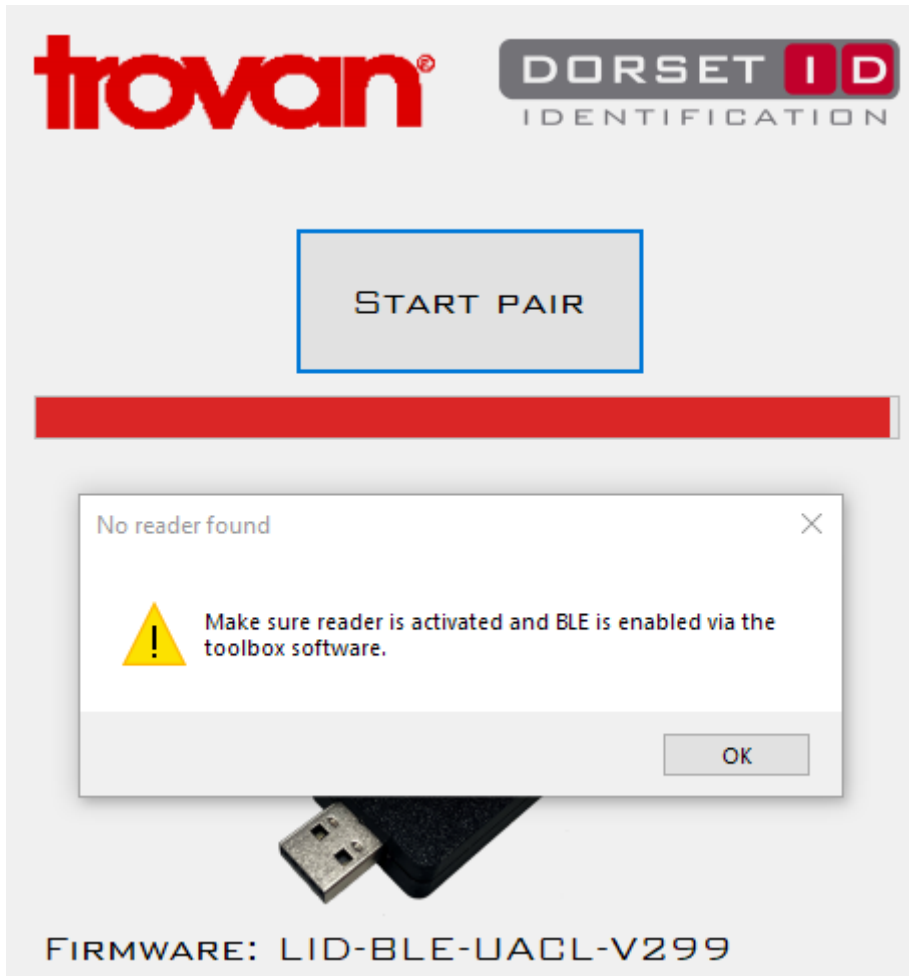


Figure 4 Unsuccessful pairing

If pairing was not successful check if your reader has the BLE module installed and sending ID via BLE is enabled.

Use the **Toolbox software** to modify the BLE settings if necessary.